

Victorians chase Wattle Farm genetics

DEMAND for Border Leicester ewes was fierce at Wattle Farm's eighth annual on-property sale last Friday.

The Sutton family's Temora-based stud sold all 21 ewes offered for a top of \$650 and an average of \$476.

The top priced stud ram sold for \$3500 to young Victorian stud owners, Patrick Anderson of Kings Veldt Border Leicesters and Kasey Shields of Santana Vale stud.

It was one of three stud rams sold of seven offered with stud principal Jeff Sutton, deciding to wait for the right price and pass in a couple of his top ribbon winners.

Flock rams topped at \$2000 and averaged \$1122 with 40 sold at auction of the 77 on offer.

Mr Sutton said the ewe portion of the sale in particular was tremendous.

"Not just what they made but we had a number of people here who had never bought ewes before and some of them were interstate buyers," Mr Sutton said.

"I'm really pleased for the family, how much hard work we put in and how much encouragement we've had in these hard times to continue."

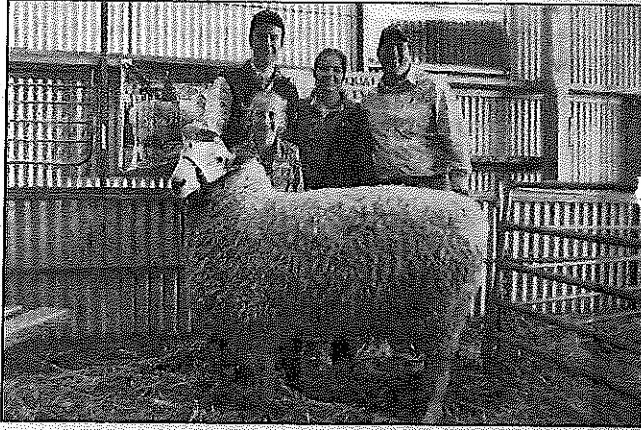
The volume buyer was James Baker of Springhurst, Victoria, who took home 12 of the 21 ewes offered for an average of \$454.

Mr Baker said he had been coming to their sales for the best part of seven years and liked the Sutton's Border Leicesters for their longevity.

He said he planned to join the ewes with White Suffolks to build up his first-cross flock.

The top-price for a ewe was \$650, paid by Mount Pleasant Pastoral Company, Crookwell for one of four ewes they bought on the day.

The ewe had a birth weight



The top priced ram with Christine Sutton, Wattle Farm, Temora, purchasers Patrick Anderson of Kings Veldt Border Leicesters and Kasey Shields of Santana Vale and Jeff Sutton, Wattle Farm.

of 0.3, post-weaning weight of 6.7, PFAT of -0.1, eye muscle depth of 0.5 and Borders dollar index of 114.8.

Mr Sutton said the ewe was sired by Coolawang Victory, an Adelaide champion that he bought in 2016 from the South Australia stud.

He said their top-priced ram was also by Victory.

"The top ram is a tremendous, upstanding sire, good bone, head, great back-end, a really quality animal," Mr Sutton said.

"I'm really pleased with him and I'm really pleased for the young people that bought him, that came all the way from Gippsland, Victoria."

The ram had a BWT of 0.2, PWWT of 4.3, PFAT of 0.2, EMD of 0.1 and Borders dollar index of 107.6.

Purchasers Kasey Shields and Patrick Anderson of Athlone, Vic, said they had spotted the ram at the Australian National Sheep and Wool Show at Bendigo.

"He had great structure, he's really sound, has a really good confirmation and a really nice head on him," Ms Shields said.

"That's something we're trying to introduce to our flocks to start us up well and

hopefully help us out in the show ring.

"He'll definitely be shown at some of our local shows. Border Leicesters aren't a big breed in Gippsland so it will be good to introduce the breed into the shows and encourage more youth to get involved."

Mr Anderson, who started his stud earlier this year, said they were aiming to breed large-framed, square ewes.

"Where we are it's a bit hilly so they've got to have good feet and legs and be able to produce," Mr Anderson said.

It was their first time buying from Wattle Farm, Ms Shields also purchasing two ewes at the sale.

A second stud ram sold for \$3000 to Sunbury Border Leicesters of Crookwell.

The ram had a BWT of 0.2, PWWT of 4.8, PFAT of -0.2, EMD of 0.3 and border dollar index of 110.5.

Flock ram buyers included Greg Maroney, Wangaratta, Roger Waters and RB and H Sheridan.

The sale was conducted by Schute Bell and Landmark Wagga with Jason Hartin and Tim Woodham taking turns with the gavel.

- OLIVIA CALVER



Elizabeth, Christine and Jeff Sutton, Wattle Farm stud, Temora, took out both ram and ewe grand champions of the Border Leicester breed for the second year running.

Wattle Farm stud makes it back-to-back

BY MARK GRIGGS

GRAND champion ribbons flowed for Jeff Sutton and family when their Wattle Farm stud, Temora, took out both ram and ewe awards for the second consecutive year at Sydney Royal Show.

Success in the Border Leicester judging began with their junior champion ram, which had won the youngest under one year milk tooth woolly class with a half-brother to the 2018 Sydney champion and sired by a Glenlee ram.

This was the ram's first major showing after Gundagai where he was grand champion, and was described by the judge as having a very good, clean sirey head with good neck extension and good length of body, stood very well and had a very good fleece.

A large contingent of 98 Border Leicesters were judged by Ian Tonacia, Mt Beckom stud, Ardlethan, who returned to the Sydney judging mats for the second time having officiated at the Moore Park showground in 1990.

Junior sheep were dominant in numbers with 37 rams and 35 ewes. Seniors

tallied 14 rams and 12 ewes.

Wattle Farm's senior and grand ewe, Wattle Farm Bluebelle, was a daughter of Coolawang Victory and won the under two years woolly class and also victorious at Gundagai show.

The stud also exhibited the best headed ram and the winning group of four and group of six head.

Reserve grand champion ewe was the junior champion shown by North South stud of the Makeham family based at Young and Walcha.

This ewe had won the youngest ewe class, woolly under one milk tooth, and was grand champion at Canberra Royal and Yass show.

Mr Tonacia said the grand champion ewe was very well balanced.

"She has a beautiful head with long, velvety ears, very good spring of ribs and an extremely even fleece of wool," he said.

"I chose the senior ewe for grand as she was more mature than the junior, but the young ewe has as good a fleece on her as you would see on a Border Leicester and very well balanced too."

Crookwell based Talkook stud of the Anderson family exhibited the senior cham-

pion ram with a son of a Mt Beckom sire in their fourth year of showing at Sydney.

Normanhurst stud conducted by the Corkhill family, Boorowa, gained two reserve broad ribbons, the first was reserve junior champion ram, which stood second in the youngest class to Wattle Farm's winner and junior champion.

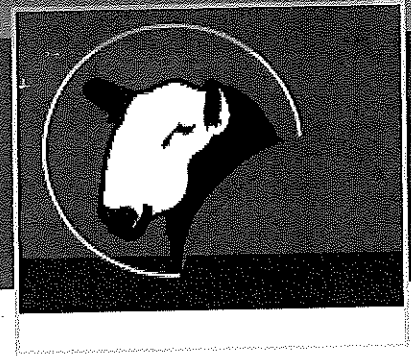
This ram was by a Glencorie sire and stood third in his class at Canberra Royal and reserve junior champion at Boorowa show. However, he stood out at Sydney winning the production class while another Normanhurst stud ram was placed third.

Normanhurst's reserve junior ewe stood second in his class to the North South champion and the stud also won the Peter Taylor group of three head consisting of a ram and two ewes.

Jamie and Tracey Buerckner, Bauer stud, Aria Park, exhibited the reserve senior champion ewe, a member of the stud's winning pair of ewes at the 2018 Bendigo Australian Sheep and Wool show and later at Melbourne Royal.

The ewe had stood second to the senior champion in their class.

WATTLE FARM Border Leicester Stud



Breeding Champion Borders



Grand
Champion
Border
Leicester
Ram & Ewe

Major show successes at
Sydney Royal Easter Show



Enquiries for Stud and Flock rams always welcome.
Please contact us for your semen catalogue from our top sires
For more information contact **Jeff Sutton**
Ph: (02) 6978 1810 Mob: 0418 203 440
Email: wattle.farm@bigpond.com Web: www.wattlefarm.com.au



Toowoomba Royal Show

AROUND THE SHOWS

The most successful Border Leicester exhibitor at the Toowoomba Royal Show was awarded to the Makeham's North South Stud, NSW.

The North South Stud made a clean sweep of the Border Leicester showing under the eye of Judge, Jeff Sutton, Wattle Farm, NSW.

North South won the supreme Border Leicester and champion long wool exhibit of the show.



1. For the first time in several years, Border Leicesters were in the ring at the Toowoomba Royal Show. The Champion and Reserve Champion Border Leicester ewes were won by Michael and Elizabeth Makeham, from Walcha, NSW. The Judge was Jeff Sutton, Wattle Farm, NSW. 2. The Supreme Champion Border Leicester Ewe won by Makeham family, Walcha, NSW and held by Michael Makeham. 3. Champion Suffolk Ram was won by Calvary Christian College, Loganholme Qld. 4. Toowoomba Royal Show Champion Suffolk Ewe, won by Calvary Christian College. 5. The Supreme sheep of the show with the Fred Bebbington Memorial Trophy. Fred was the Patron of the Queensland Branch of ASSBA and was a prominent breeder of Dorset Downs for many years.

